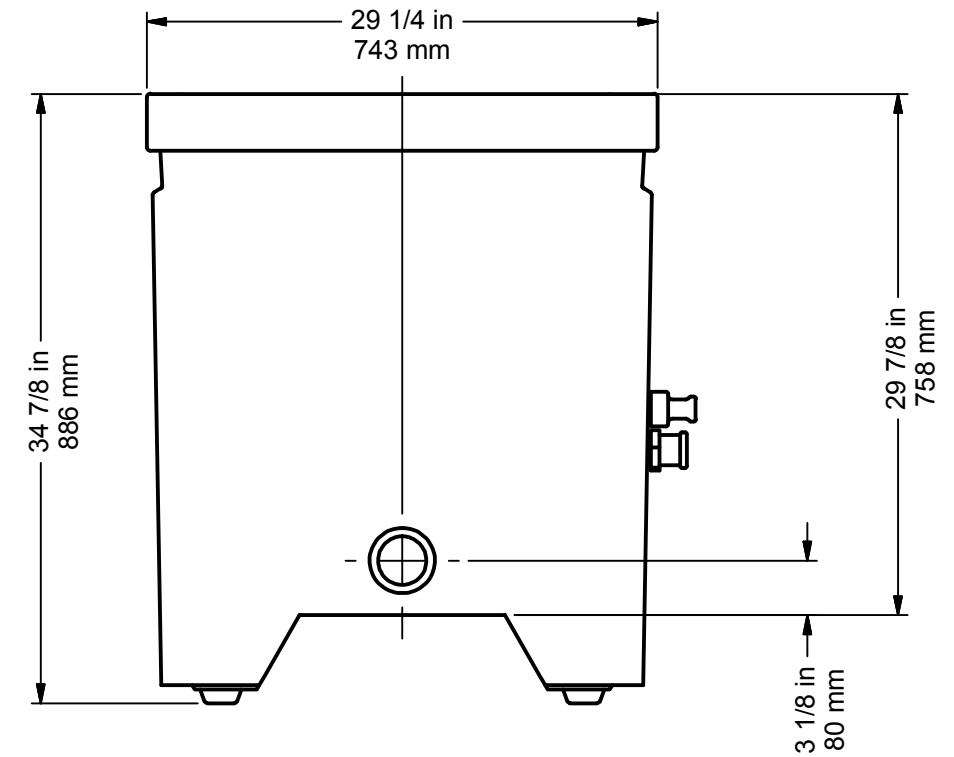
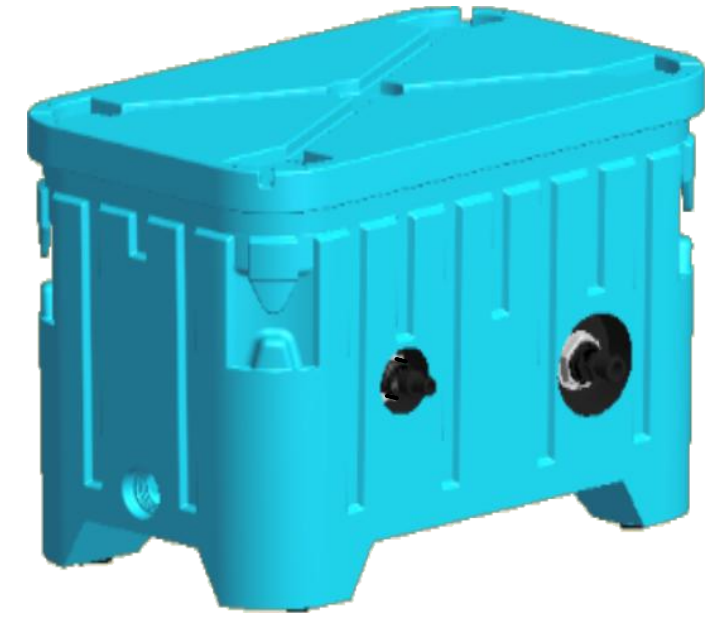



**SPECS:**

- \* 110v / 15amp GFCI protected
- \* Completely portable
- \* Fits through standard doorway
- \* No plumbing required (fills and drains with a standard water hose)
- \* 2 in 1 Cold/Hot (42 - 104 degrees)
- \* 1.5kw titanium heater
- \* Chilling system
- \* Safety certified to meet UL, CSA and European Standards



DRAWN	JLT	4/25/2016			
CHECKED					
QA					
MFG					
APPROVED			TITLE		
			ICEKUBE BLUE		
			SIZE	DWG NO	REV
			A3	4/25/16_00	0
			SCALE	SHEET 1 OF 2	